



# Yumiko Chiba Associates

## Paris Photo | Booth No. D10

Grand Palais | November 9 – 12, 2017

[www.parisphoto.com](http://www.parisphoto.com)

The Gallery will present the work of;

**Kanji Wakae, Norio Imai, Masafumi Maita, Katsuro Yoshida, Kazuyo Kinoshita, Kosuke Kimura, Eikoh Hosoe, Kazuo Kitai, Ryudai Takano**

<http://www.parisphoto.com/en/Exhibitors/3732211/YUMIKO-CHIBA>

Kazuo Kitai's *Teiko/Resistance*, and *Somehow Familiar Places* are selected by Paris Photo 2017's Guest of Honour for Paris Photo by Karl Lagerfeld and *Somehow Familiar Places* by J.P Morgan Curator's Highlights.

### Collage:

#### The multidimensionality of reality and images

The introduction of photography into avant-garde art started in the 1920's and 30's with Dada, Surrealism and Constructivism. Pop Art of the latter half of the 50's took in photographs and the multiple images onto pictorial surface. The artists of Minimal-Conceptualism of the '70's used photography as a medium to expunge subjects from their works to purely visualize their concepts.

Japan saw some photographic expressions in art in MAVO, Action and Futurist Art Association in response to the Russian Avant-Garde and Futurism in the 1920s, but it was from the late sixties to early seventies that photography was truly used in contemporary art in Japan.

The artists of the time used the attributes of photography such as reproducibility, plurality, realism, recordability, and objectivity to create 'the images of photographic images' by combining the direct method by photography with other media such as print or drawing as collage so as to avoid straight photography.

What was important was that their focus was not on the photographed objects themselves but on the disclosure of: visual structures constituted of the action of photographing and that of being photographed; the relationship between reality and virtual images; or the act of photographing and the state of being photographed. For the expression of such bipolarity and duality, the medium of collage was used very effectively by many artists then.

Our booth will present how each artist attempted between reality and art the actual expressions of the issues captured in their daily life by using the method and definition of collage.

In recent years, contemporary Japanese photography from the 1970s are achieving high recognitions and gathering attentions overseas. Recently, three large exhibitions of *For a New World to Come* (The Museum of Fine Arts, Houston 2015) *Performances for the Camera* (Tate Modern 2016) and *Provoke: Photography in Japan between Protest and Performance, 1960–1975* (Albertina, Vienna, Winterthur Fotomuseum, Switzerland, The Art Institute of Chicago, and LE BAL, Paris 2016-2017) were organized.

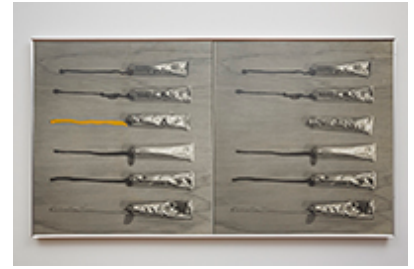
Prior to these projects, Yumiko Chiba Associates has held *To the 1970s* in 2011. It has also co-curated similar exhibitions with Marianne Boesky Gallery in New York in 2014, as well as with Galerie 1900-2000 and Galerie Christophe Gaillard in Paris in 2017 to present them in these galleries. Some of the works exhibited in these shows are now in the collection of renowned art institutions, e.g. the Museum of Fine Arts, Houston, the Museum of Modern Art, and Centre Pompidou.

**Kanji Wakae (1944-)**

1944 Born in Yokosuka, Kanagawa Japan

**Selected Solo Exhibitions**

- 2016 *Visibility*, Yumiko Chiba Associates viewing room shinjuku, Tokyo, Japan  
 2013 *Domain of Mirror - Downfall & Turnover*, Yumiko Chiba Associates viewing room shinjuku, Tokyo, Japan  
 2004-5 *Kanji Wakae*, Aomori Contemporary Art Center, Aomori, Japan  
 2004 *Under the Light of Time*, Museum of Modern Art, Kamakura, Kanagawa, Japan  
 2001 *Millennium-V*, President's Gallery, Massachusetts College of Arts, Boston, USA  
 2001 *Millennium-IV*, LeRoy Nieman Center for Print Studies, Columbia University, NY, USA  
 1994 *Kanji Wakae: Photographic Prints and Sculpture*, Japan Information and Culture Center, Washington, DC, USA  
 1994 *Vessel Drawings by kanji Wakae*, Pyramid Atlantic Library/Gallery, Maryland, USA  
 1989 *Trend-I*, Kunst-und Museumsverein Wuppertal, West Germany  
 1975 *Galerie m*, Bochum, West Germany  
 1968 Yoseido Gallery, Tokyo



©Kanji Wakae, Courtesy of Yumiko Chiba Associates

**Selected Group Exhibitions**

- 2017 *Japanese conceptual photography from the 70's*, GALERIE CHRISTOPHE GAILLARD and GALERIE 1900-2000, Paris, France  
 2015-16 *For a New World to Come: Experiments in Japanese Art and Photography, 1968-1979*, Museum of Fine Arts, Houston, then this will tour to Grey Art Gallery, NY (Sep 11 - Dec 5, 2015), and Japan Society, NY (Oct 9, 2015 - Jan 11, 2016)  
 2014 *Image and Matter in Japanese Photography from the 1970s* - Curated by Yumiko Chiba, Marianne Boesky Gallery, New York, USA  
 2011 *To the 1970s: The Turning Point of Photography & Art*, Yumiko Chiba Associates viewing room shinjuku, Tokyo, Japan  
 2011 *Noriyuki Haraguchi/ Kanji Wakae*, Yokosuka Museum of Art, Kanagawa, Japan  
 1983 *Photography in Contemporary Art*, The National Museum of Modern Art, Tokyo, Japan; The National Museum of Modern Art, Kyoto, Japan  
 1980 *Simulated Images in Contemporary Art*, The National Museum of Art, Osaka, Japan  
 1977 *Malerei und Photographie im Dialog von 1840 bis Heute*, Kunsthau Zurich, Switzerland  
 1974 *Cosmos*, The Museum of Modern Art, São Paulo, Brazil  
 1974 *Tokyo Biennial '74*, Tokyo Metropolitan Art Museum, Tokyo, Japan  
 1973 *Contemporary Japanese Prints*, Boston, USA; NY, USA  
 1973 *The 12th Biennial of Sao Paulo*, Brazil  
 1972 *Contemporary Japanese Graphic Art Exhibition*, ICA, London

**Selected Public Collection**

Ministry of Education, Culture, Sports, Science and Technology/ Tochigi Prefectural Museum of Fine Arts/ The Museum of Modern Art, Kamakura & Hayama/ Museum of Contemporary Art Tokyo/ The National Museum of Modern Art, Tokyo/ Kawaguchiko Museum of Art/ Machida City Museum of Graphic Arts/ Aomori Contemporary Art Centre/ Yokosuka Museum of Art/ The National Museum of Art, Osaka/ MUSEUM HAUS KASUYA/ National Museum, Kraków, Poland/ Geschichtsmuseum der Stadt Lüdenscheid, Germany/ Kunsthalle Bielefeld, Germany/ Von der Heydt-Museum, Germany, Centre Georges-Pompidou, France

**Norio Imai (1946-)**

1946 Born in Osaka Japan  
 1965 Joined Gutai Art Association

**Selected Solo Exhibitions**

- 2016 *White Event × moving images 1966 – 2016*, Yumiko Chiba Associates viewing room shinjuku, Tokyo, Japan  
 2015 *Gutai Works*, Axel Vervoordt Gallery Hong Kong, China  
 2015 *(Part 1)Shadow of Memory / (Part 2)White Event*, Galerie Richard Paris, France  
 2015 *Time Collection*, Yumiko Chiba Associates viewing room shinjuku, Tokyo, Japan  
 2014 *It Begins with White*, Yumiko Chiba Associates viewing room shinjuku, Tokyo, Japan  
 2012 *Norio Imai Retrospective – From 17 to 22 Years Old*, ARTCOURT Gallery, Osaka, Japan  
 1981 *Video Works*, The Bank, Amsterdam, Holland  
 1966 *Gutai Pinacotheca*, Osaka, Japan  
 1964 *Norio Imai Solo Exhibition – Testimony of a 17-Year-Old*, Noonu Gallery, Osaka, Japan



©Norio Imai, Courtesy of Yumiko Chiba Associates

**Selected Group Exhibitions**

- 2017 *Japanese conceptual photography from the 70's*, GALERIE CHRISTOPHE GAILLARD and GALERIE 1900-2000, Paris, France  
 2016 *Performing for the Camera*, Tate Modern, London, UK  
 2015 *Re: play 1972/2015-Restaging "Expression in Film '72"*, The National Museum of Modern Art, Tokyo, Japan  
 2015 *PROPORTIO*, Palazzo Fortuny, Venice, Italy  
 2014 *Image and Matter in Japanese Photography from the 1970s*, Marianne Boesky Gallery, New York, USA  
 2013 *Gutai: Splendid Playground*, Solomon R. Guggenheim Museum, New York, USA  
 2012 *Gutai: The Spirit of an Era*, The National Art Center, Tokyo, Japan  
 2012 *A Visual Essay on Gutai at 32 East 69 Street*, Hauser & Wirth, New York, USA  
 2011 *Masked Portrait – When Vibrations Become Forms*, Marianne Boesky Gallery, New York, USA  
 2007 *Radical Communication: Japanese Video Art 1968-1988*, The Getty Center, Los Angeles, USA  
 1994 *Japanese Art after 1945: Scream Against the Sky*, Yokohama Museum of Art, Kanagawa, Japan; Solomon R. Guggenheim Museum, New York, USA; San Francisco Museum of Modern Art, USA  
 1983 *Photography in Contemporary Art*, The National Museum of Modern Art, Tokyo, Japan; The National Museum of Modern Art, Kyoto, Japan  
 1982 *4th Biennale of Sydney*, New South Wales Institute of Technology, Sydney, Australia  
 1969 *Fluorescent Chrysanthemum-Contemporary Japanese Art*, ICA, London, UK  
 1967 *5th Biennale de Paris*, Musée des Beaux-Arts de la Ville de Paris, Paris, France  
 1964 *14th Gutai Art Exhibition*, Takashimaya Department Store, Osaka, Japan

Park Grace Shinjuku Bldg. 316, 4-32-6, Nishi-Shinjuku, Shinjuku-ku, Tokyo 160-0023 Japan

Opening Hours: 12:00 - 19:00 (Closed on Sunday, Monday, National Holiday) [info@ycassociates.co.jp](mailto:info@ycassociates.co.jp) +81-3-6276-6731

**Selected Public Collection**

Axel and May Vervoordt Foundation, Belgium/ Ashiya City Museum of Art and History/ The Getty Center, Los Angeles, USA/ The Museum of Modern Art/ Osaka City Museum of Fine Arts/ The Rachofsky Collection, Dallas, USA/ Hyogo Prefectural Museum of Art/ The Miyagi Museum of Art

**Masafumi Maita (1944 - 2009)**

1944 Born in North-Eastern China, then Manchuria, and grown up in Japan

**Selected Solo Exhibitions**

2013 Yokosuka Museum of Art, Kanagawa, Japan  
 2012 Minokamo City Museum of Art, Gifu, Japan  
 2006-2007 Iwate Museum of Art, Iwate, Japan  
 2004-2005 Minokamo City Museum of Art, Gifu, Japan  
 2003 Ohara Museum of Art, Okayama, Japan  
 1997 Nizayama Forest Art Museum, Toyama, Japan  
 1995 The Sapporo Museum of Sculpture, Sapporo, Japan  
 1985 Passages-Centre d'art Contemporain, Troyes, France  
 1983 Space, Los Angeles, USA ('89)  
 1972 Galerie Lambert, Paris, France  
 1966 Muramatsu Gallery, Tokyo, Japan ('71,'75,'79,'81,'83)



©Masafumi Maita, Courtesy of Yumiko Chiba Associates

**Selected Group Exhibitions**

2017 *Japanese conceptual photography from the 70's*, GALERIE CHRISTOPHE GAILLARD and GALERIE 1900-2000, Paris, France  
 2015 *For a New World to Come: Experiments in Japanese Art and Photography, 1968-1979*, Museum of Fine Arts, Houston, then this will tour to Grey Art Gallery, NY (Sep 11 - Dec 5, 2015), and Japan Society, NY (Oct 9, 2015 - Jan 11, 2016)  
 2014 *Image and Matter in Japanese Photography from the 1970s*, curated by Yumiko Chiba, Marianne Boesky Gallery, New York, USA  
 2008 *Sette artisti giapponesi espongono nelle marche*, Italy  
 2007 *JUNGE KUNST AUS JAPAN*, Kunsthalle Rostock Rostock, Germany  
 1994 *Dialogue of Photography and Sculpture: Anzai/Maita*, The Museum of Modern Art, Kamakura, Japan  
 1990 *Territoires 1* Reims Museum of Fine Art, France  
 1986 *The 42nd Venice Biennale*, Italy  
 1983 *Photography in contemporary Art*, The National Museum of Modern Art, Tokyo; Kyoto, Japan  
 1981 *Temoignage'81*, Centre Georges Pompidou, Paris, France  
 1977 *The 10th Paris Biennale*, Musee d'Art Moderne de la Ville de Paris, France  
 1976 *The 37th Venice Biennale*, Italy  
 1974 Japan pa Louisiana Louisiana Museum, Denmark; 1974 Goteborgs Konstmuseum, Sweden; Onstads Museum, Norway  
 1972 *Arte Contemporanea del Giappone*, Palazzo Della Societa, Milano, Italy  
 1971 *Arte Contenporanea do Japao Museu de Arte Moderna do Rio de Janeiro, Brazil*

**Selected Public Collection**

Museum of Fine Arts, Houston, USA/ Musee d' Art Moderne de la Ville de Paris, France/ Musee d' Art Moderne de Troyes, France Musee Cantini, Marseille, France/ Musee d' Art Moderne de Strasbourg/ France Ecole des Beaux-Arts de Reims, France Santa barbara Museum of Modern Art, Mammola, Italy/ Ministere de la Culture, France/ The State Foundation on Culture and the Arts, Hawaii, USA/ Azienda Vinicola Salomone, Matelica (MC), Italy

**Katsuro Yoshida (1943 - 1999)**

1943 Born in Yokosuka, Kanagawa Japan  
 1973 Received a grant from Japanese Government to stay in England  
 1999 Died in Kanagawa

**Selected Solo Exhibitions**

2011 Kamakura Gallery, Kamakura, Japan ('13)  
 2010 Yokota Shigeru Gallery, Tokyo, Japan  
 1988 IBM Gallery, Kawasaki, Japan  
 1979 Tokyo Gallery, Tokyo, Japan ('87, '89, '92)  
 1977 Upstairs Gallery, San Francisco, USA  
 1971 Pinar Gallery, Tokyo, Japan  
 1969 Tamura Gallery, Tokyo, Japan



©Katsuro Yoshida, Courtesy of Yumiko Chiba Associates

**Selected Group Exhibitions**

2017 *Japanese conceptual photography from the 70's*, GALERIE 1900-2000, Paris, France  
 2017 *Collection Exhibition 2017-Spring*, The Museum of Modern Art, Wakayama, Japan  
 2015 *MONO-HA*, Fondazione Mudima, Milano, Italy  
 2014 *Image and Matter in Japanese Photography from the 1970s*, curated by Yumiko Chiba, Marianne Boesky Gallery, New York, USA  
*40th Anniversary Exhibition Part 2 Turning Point of Japanese Art after World War II*, The Museum of Modern Art, Gunma, Japan  
*Other Primary Structures*, The Jewish Museum, USA, Upper East Side  
 2013 *Parallel Views: Italian and Japanese Art from the 1950's, 60's and 70's*, The Warehouse, Dallas  
 1997 *Gravity: Axis of Contemporary Art*, National Museum of Art, Osaka  
 1995 *Matter and Perception 1970: Mono-ha and the Search for Fundamentals*, Museum of Fine Arts, Gifu, Japan/ Hiroshima City Museum of Contemporary Art, Japan/ Kitakyushu Municipal Museum of Art, Japan/ The Museum of Modern Art, Saitama, Japan  
 1994 *Japanese Art after 1945: Scream Against the Sky*, Yokohama Museum of Art/ Guggenheim Museum Soho, New York, USA/ San Francisco Museum of Modern Art, USA (~1995)  
 1990 *Minimal Art*, National Museum of Art, Osaka, Japan  
 1986 *Le Japon des Avant-Gardes 1910-1970*, Centre Georges Pompidou, Paris, France  
 1971 *The 7th Paris Youth Biennale*, Parc Floral de Paris, France  
 1970 *Human Documents '70*, Tokyo Gallery, Tokyo, Japan  
 1970 *Trends in Contemporary Japanese Art*, National Museum of Modern Art, Tokyo, Japan

Park Grace Shinjuku Bldg. 316, 4-32-6, Nishi-Shinjuku, Shinjuku-ku, Tokyo 160-0023 Japan

Opening Hours: 12:00 - 19:00 (Closed on Sunday, Monday, National Holiday) [info@ycassociates.co.jp](mailto:info@ycassociates.co.jp) +81-3-6276-6731





1969 *Trends in Contemporary Art*, National Museum of Modern Art, Kyoto, Japan

#### Selected Public Collection

The Museum of Modern Art, Kamakura & Hayama/ The National Museum of Modern Art, Tokyo/ The National Museum of Art, Osaka/ British Museum/ Los Angeles County Museum of Art (LACMA)/ The Museum of Modern Art, New York/ JPMorgan Chase Art Collection

#### Kazuyo Kinoshita (1939 - 1994)

1939 Born in Kobe, Japan  
1994 Died in Kobe, Japan

#### Selected Solo Exhibitions

2017 *In Search of Substantiality - Unifying the Absolute and the Relative*,  
Yumiko Chiba Associates viewing room shinjuku, Tokyo, Japan  
2014-15 Kazuyo Kinoshita Memorial Museum, Kobe, Japan  
1989 AD&A Gallery, Osaka, Japan ('91, '92, '94, '96)  
1981 Heidelberger Kunstverein, West Germany  
1974 Muramatsu Gallery, Tokyo, Japan ('75, '76, '78, '80, '82, '83)  
1972 galerie16, Kyoto, Japan ('73-'78, '80, '82, '91)



©Kazuyo Kinoshita, Courtesy of Yumiko Chiba Associates

#### Selected Group Exhibitions

2017 *Japanese conceptual photography from the 70's*, GALERIE CHRISTOPHE GAILLARD and GALERIE 1900-2000, Paris, France  
2015-16 *For a New World to Come: Experiments in Japanese Art and Photography, 1968-1979*, Museum of Fine Arts, Houston, USA/ Grey Art Gallery, NY, USA/ Japan Society, NY, USA  
1994 *Art in Kansai 1950's-1970's*, Hyogo Prefectural Museum of Modern Art, Kobe, Japan  
1992 *Paintings Now - OSAKA '92*, Osaka Contemporary Art Center, Japan  
1989 *Das Foto als autonomes Bild Experimentelle Gestaltung 1839-1989*, Bielefeld, Munich, West Germany  
1984 *International Experimental Art*, Petofi Osarnok, Budapest, Hungary  
1982 *Travaux sur Papier*, organized by Dany Bloch, Paris, France  
1982 *Photography in Contemporary Art*, MOMAT and MOMAK, Japan  
1978 *Art Now '78*, Hyogo Prefectural Museum of Modern Art, Kobe, Japan  
1978 *12th Tokyo Biennale*, Tokyo Metropolitan Art Museum, Japan  
1977 *8th International Young Artists Exhibition*, Tokyo Metropolitan Art Museum, Japan  
1976 *12th Contemporary Art Exhibition of Japan*, Tokyo Metropolitan Art Museum, Japan ('77, '79)  
1974 *Signifying. Language-Thing/with the manifestation of attitude*, Kyoto Municipal Museum of Fine Arts, Japan  
1963 *Kyoto Independents Exhibition*, Kyoto Municipal Museum of Fine Arts, Japan ('71-'85)  
1960-66 Group Exhibitions, Kobe, Osaka, Kyoto, Japan

#### Selected Public Collection

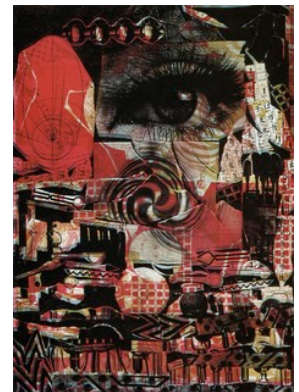
Hyogo Prefectural Museum of Modern Art, Kobe/ The National Museum of Modern Art, Osaka/ Shizuoka Prefectural Museum of Art, Shizuoka/ Doshisha University, Tanabe campus, Kyoto

#### Kosuke Kimura (1936-)

1936 Born in Osaka, JAPAN.  
1956 Graduated from the Department of Japanese Art, Kyoto City University of Arts  
2001 Received an honorary doctorate from Mahasarakham University, Thailand

#### Selected Solo Exhibitions

2012 *Collage of Images*, YOD Gallery, Osaka, Japan  
1979 *The Prints and Sculptures of Kosuke Kimura*, Osaka Citizens' Gallery, Osaka, Japan  
1975 Shirota Gallery, Tokyo, Japan  
1974 Fuma Gallery, Tokyo, Japan  
1973 "CUBIC" gallery ITEZA, Kyoto, Japan  
1972 Shinanobashi Gallery, Osaka, Japan  
1971 Faena Arts Center Buenos Aires, Buenos Aires, Argentine  
1969 Kinokuniya Gallery, Tokyo, Japan



©Kosuke Kimura

#### Selected Group Exhibitions

1974 *The 7th Biennial of Ibiza, Ibiza, Spain* (Participated in the 7th of the same show in '76.)  
1973 *World Print Competition of America*, San Francisco, USA  
*Contemporary Japan Prints*, Museum of Fine Arts Boston, USA; New York Culture Center, New York, USA  
1972 *The 1st Norwegian International Print Exhibition*, Fredrikstad, Norway (Participated in the 4th and 5th of the same show in '78 and '80.)  
*Silkscreen: History of a Medium*, Philadelphia Museum of Art, Philadelphia, USA  
*The 9th Biennale Internationale d'Art de Menton*, France (Participated in the 12th of the same show in '76.)  
*The 2nd Seoul International Print Biennial*, Seoul, Korea (Participated in the 4th of the same show in '83.)  
*The 3rd International Print Biennale*, Florence, Florence, Italy  
*The 4th International Print Biennial Krakow*, Kraków, Poland (Participated in the 7th, 8th and 10th of the same show in '78, '80 and '84.)  
1971 *SEATTLE PRINT INTERNATIONAL 1971, 42nd International Exhibition of the Northwest Printmakers*, Seattle Art Museum, Seattle, USA  
*The 11th São Paulo Art Biennial*, Chitchiro, Matarazzo Pavilion, São Paulo, Brazil  
*The 6th Preliminary Show of Japan Art Festival*, The National Museum of Modern Art, Tokyo, Tokyo, Japan  
*The 9th Ljubljana International Biennial of Graphic Art*, Ljubljana, Yugoslavia (Participated in the 11th, 12th, 13th, 14th and 15th of the same show in '75, '77, '79, '81 and '83.)  
1970 *Second British International Print Biennale*, Bradford City Art Gallery, Bradford, UK  
*The 7th International Biennial Exhibition of Prints in Tokyo*, The National Museum of Modern Art, Tokyo, Japan  
1969 *The 5th International Young Artists Exhibition*, Seibu Ikebukuro, Tokyo, Japan

Park Grace Shinjuku Bldg. 316, 4-32-6, Nishi-Shinjuku, Shinjuku-ku, Tokyo 160-0023 Japan

Opening Hours: 12:00 - 19:00 (Closed on Sunday, Monday, National Holiday) [info@ycassociates.co.jp](mailto:info@ycassociates.co.jp) +81-3-6276-6731



*The 9th Contemporary Japanese Art Exhibition*, Tokyo Metropolitan Art Museum, Tokyo, Japan  
*Trends in Contemporary Art*, The National Museum of Modern Art, Kyoto, Japan (Participated in the same annual show in '70.)

**Awards**

- 2001 The award for cultural distinguished service by Kyoto Prefecture
- 1999 Medal with Purple Ribbon
- 1996 Kyoto Art and Culture Prize, Medal with Dark Blue Ribbon
- 1994 Kyoto Prefecture Culture Prize and Distinguished Services Prize
- 1978 Prize of The National Museum of Modern Art, Tokyo, *The 6th Contemporary Sculpture Exhibition*
- 1972 Grand Prize, *The 1st Norwegian International Print Exhibition*
- 1971 Grand Prize, *The 6th Japan Art Festival*
- Grand Prize, *The 9th Ljubljana International Biennial of Graphic Art*
- 1970 Richard Gainsborough Memorial Award, *Second British International Print Biennale*

**Public Collections**

The National Museum of Modern Art, Tokyo/ National Museum of Modern Art, Kyoto/ The National Museum of Art, Osaka/ Museum of Modern Art, New York/ San Francisco Museum of Modern Art/ The Philadelphia Museum of Art/ Cincinnati Art Museum; The National Museum of Ljubljana/ The National Museum of Krakow/ Bradford City Museum/ Ibiza Museum of Contemporary Art/ Agency for Cultural Affairs/ Ministry of Foreign Affairs

**Eikoh Hosoe (1933-)**

1933 Born in Yonezawa, Japan

**Selected Exhibitions**

- 2016 *Provoke: Photography in Japan between Protest and Performance, 1960–1975*, The Art Institute of Chicago, Chicago, Le Bal, Paris, Fotomuseum Winterthur, Zurich, Albertina, Vienna
- 1990 *EIKOH HOSOE: META*, Center for Creative Photography of the University of Arizona, Tucson, University of Massachusetts, Amherst, Massachusetts, Midtown Gallery, International Center of Photography, New York, Georgia Museum of Art, Athens, Georgia, Japanese-American Community Cultural Center, Los Angeles, California, Museum of Photographic Arts, San Diego, California, Kulturhuset, Stockholm, Breda Fotografia '93, Netherlands, Washington State University Museum, Pullman, Washington, Month of Photography, Bratislava, Slovakia, Museet for Fotokunst, Odense, Denmark, Centro de la Imagen, Mexico, Fine Art Gallery, Maryland University, Maryland, and Main Gallery, Zoellner Arts Center, Lehigh University, Bethlehem, Pennsylvania.
- 1985 *Ordeal by Roses*, Burden Gallery, New York. (All the works of the 'Ordeal by Roses' series).
- 1982 *Eikoh Hosoe Retrospective 1960-1980*, Musée d'art moderne de la Ville de Paris.  
*Eikoh Hosoe: The Human Figure: 1960-1980*, International Museum of Photography at George Eastman House, Rochester, New York. ('Man and Woman,' 'Ordeal by Roses,' 'Embrace,' 'Ansel Adams Gallery Workshop' series)
- 1973 *Eikoh Hosoe*, Light Gallery, New York. ('Ordeal by Roses,' 'Kamaitachi,' 'Embrace,' 'Simon: A Private Landscape' series)
- 1969 *Man and Woman*, Smithsonian Institution, Washington, D. C.



Eikoh Hosoe, "Kamaitachi" #32, 1965, Byobu, Epson Ink-jet Print on Washi Paper ©Eikoh Hosoe

**Selected Awards**

- 2010 A person who has performed distinguished services in the field of culture
- 2007 Order of the Rising Sun
- 2006 Visionary Award of the Lucie Awards
- 2003 Special Decoration from The Royal Photographic Society on the occasion of its 150th anniversary
- 1998 Medal with Purple Ribbon
- 1969 Award from the Ministry of Education in the Art Encouragement Prizes

**Selected Public Collections**

Tokyo Photographic Art Museum/ Kawasaki City Museum/ The National Museum of Modern Art, Tokyo/ Kiyosato Museum of Photographic Arts, Tokyo/ Polytechnic University/ The Museum of Modern Art, New York/ Maison Européenne de la Photographie, Paris

**Kazuo Kitai (1944-)**

1944 Born in Manchuria

**Selected Solo Exhibitions**

- 2016 Zen Foto Gallery, Tokyo, Japan
- 2015 MIYAKO YOSHINAGA, New York, USA
- 2014 *To the Villages-Kitai Kazuo's Classic Photography*, Aki Gallery, Taipei, Republic of China
- 2013 Lifetime Achievement Award of The Photographic Society of Japan  
*Somehow Familiar Places*, Tokyo Photographic Art Museum, Tokyo, Japan  
*Barricade*, Harper's Books, East Hampton, New York, USA
- 2011 *"tohjiba" healing spas of rural Japan*, Zen Foto Gallery, Tokyo, Japan  
*Spanish Night*, Gallery TOSEI, Tokyo, Japan
- 2010 China 1973, Zen Foto Gallery, Tokyo, Japan
- 2009 *Walking with Leica I*, Gallery TOSEI, Tokyo, Japan
- 2006 *80's Funabashi Story*, Gallery TOSEI, Tokyo, Japan
- 2004 *1990's Peking*, Gallery TOSEI, Tokyo, Japan  
*1990's Peking*, Il Tempo, Tokyo, Japan
- 2002 *Beijing*, Il Tempo, Tokyo, Japan
- 1999 *Tohjiba*, ZEIT-FOTO SALON, Tokyo, Japan  
*Sanrizuka*, Il Tempo, Tokyo, Japan



©Kazuo Kitai, Courtesy of Yumiko Chiba Associate

Selected by Paris Photo 2017's Guest of Honour for Paris Photo by Karl Lagerfeld and J.P Morgan Curator's Highlights



- 1996 *Chojyugiga*, Il Tempo, Tokyo, Japan  
 1994 *Fine Weather*, Il Tempo, Tokyo, Japan  
 1992 *Shinchojyugiga*, Il Tempo, Tokyo, Japan  
 1990 *Somehow Familiar Places*, Il Tempo, Tokyo, Japan  
 1987 *Work of Photographer Kazuo Kitai*, Funabashi Municipal Office, TOBU FUNABASHI, Funabashi, Japan  
 1978 *To the Villages*, ZEIT-FOTO SALON, Tokyo, Japan  
 1976 Kimura Ihei Award for *To the Village*  
*To the Villages*, Minolta Photo Space, Tokyo, Japan

**Selected Group Exhibitions**

- 2017 *Photo London / Kazuo Kitai and Ryudai Takano*, Somerset House, London, UK at Yumiko Chiba Associates  
 2016 *PROVOKE: Between Protest and Performance – Photography in Japan 1960-1975*, Le Bal, Paris, France  
 2015 *For A New World To Come: Experiments in Japanese Art and Photography, 1968-1979*, The Museum of Fine Arts, Houston, USA; Grey Art Gallery, New York University, New York, USA; Japan Society, New York, USA  
 2013 *1968-Japanese Photography*, Tokyo Photographic Art Museum, Tokyo, Japan  
 2009 *Strange Lands: Photographer's Sentimental Journey*, Tokyo Photographic Art Museum, Tokyo, Japan  
 2007 *Showa: Photography 1945- 1989, Part III: The Period of Rapid Growth*, Tokyo Photographic Art Museum, Tokyo, Japan  
 2006 *Gazing at the Contemporary World: Japanese Photography from the 1970s to the Present*, Japan Foundation, New York, USA  
 2005 *The Gazes that Opened the New Ages: The 30 years of Kimura Ihei Award*, Kawasaki City Museum, Kawasaki, Japan  
 1992 *Photography and Climatology II*, The Miyagi Museum of Art, Sendai, Japan  
 1991 *Japanese Photography in the 1970's*, Tokyo Photographic Art Museum, Tokyo, Japan  
 1985 *Paris, New York, Tokyo*, Tsukuba Photography Museum, Ibaraki, Japan  
 1977 *11 Italian Photographers and 11 Japanese Photographers*, Istituto Italiano Cultura, Tokyo, Japan  
 1976 *Neue Fotografie aus Japan*, Stadtmuseum Graz mit Museumsapotheke, Graz, Austria  
 1974 *Fifteen Photographers Today*, The National Museum of Modern Art, Tokyo, Japan

**Selected Public Collections**

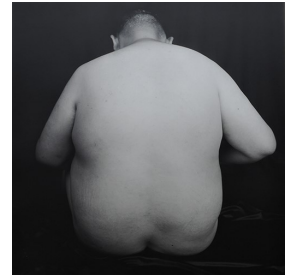
Funabashi Municipal Office, Funabashi, Japan/ Tokyo Photographic Art Museum, Tokyo/ The Miyagi Museum of Art, Sendai, Japan/ The National Museum of Modern Art, Tokyo, Tokyo, Japan/ The Art Institute of Chicago, Chicago, USA/ The Museum of Fine Arts, Houston, USA/ Pier 24 Photography, San Francisco, USA/ San Francisco Museum of Modern Art, San Francisco, USA/ JPMorgan Chase Art Collection

**Ryudai Takano (1963- )**

1963 Born in Fukui, Japan

**Selected Solo Exhibitions**

- 2017 *Photo London / Kazuo Kitai and Ryudai Takano*, Somerset House, London, UK at Yumiko Chiba Associates  
 2017 *Photo-Secession: The Illogicality of Photography-Distance and Vision*, NADiff Gallery, Tokyo, Japan  
 2016 *When the absence of light touches the ground Distance is lost and distance created*, Yumiko Chiba Associates viewing room shinjuku, Tokyo, Japan  
 2014 *In the order corresponding to shooting from January 2014 to recent date*, Yumiko Chiba Associates viewing room shinjuku, Tokyo, Japan  
 2012 *Stand up, Kikuo!*, Zeit-Foto Salon, Tokyo, Japan  
 2012 *Photo-Graph*, Yumiko Chiba Associates viewing room Shinjuku, Tokyo, Japan  
 2009 *Open Studio 46th –Document, Memory, and Something*, Fuchu Art Museum, Tokyo, Japan  
 2000 *Reclining Woo-Man*, Zeit-Foto Salon, Tokyo, Japan  
 1999 *Human Body 1/1*, Zeit-Foto Salon, Tokyo, Japan  
 1996 *Gathering Bodies*, il tempo, Tokyo, Japan



©Ryudai Takano, Courtesy of Yumiko Chiba Associates

**Selected Group Exhibitions**

- 2016 *Internationale Photoszene Köln*, Cologne, Germany  
 2015 *Our Beloved World*, Marugame Genichiro-Inokuma Museum of Contemporary Art, Kagawa, Japan  
 2014 *Photography Will Be*, Aichi Prefectural Museum of Art, Nagoya, Japan  
 2013 *Tokorozawa Biennial of Contemporary Art [railroad siding 2013]*, Former Tokorozawa School Lunch Center Number Two, Saitama, Japan  
 2011 *MODERNITY STRIPPED BARE*, University of Maryland, Washington, D.C., USA  
 2010 *Snapshots Cast Their Spell/Radiant Moments*, Tokyo Metropolitan Museum of Photography, Tokyo, Japan  
 2010 *Look at me! Portrait photographs of nude*, Tokyo Metropolitan Museum of Photography, Tokyo, Japan  
 2010 *Dazzling, Garandō (Dazzling, Hollowness)*, The University Art Museum, Tokyo University of the Arts, Tokyo, Japan  
 2009-2010 *When I Love You and When I Hate You*, Okinawa Prefectural Museum & Art Museum, Okinawa, Japan  
 2009 *Jiro Takamatsu | Ryudai Takano PHOTOGRAPH and Photograph*, Dazaifu Tenmangu Houmotsuden, Fukuoka, Japan  
 2008 *Daegu Photo Biennale 2008*, EXCO Daegu Exhibition & Convention Center, Daegu, Korea  
 2008 *Backlight 2008 Tickle Attack 8th International Photography Triennial*, Exhibition Centre TR1, Tampere etc.  
 2008 *Still / Motion: Liquid Crystal Painting*, Mie Prefectural Art Museum, Mie, Japan/ The National Museum of Art, Osaka, Japan/ Tokyo Metropolitan Museum of Photography, Tokyo, Japan  
 2005 *Post Gender*, Tikotin Museum of Japanese Art, Haifa, State of Israel  
 2004-2010 *out of ordinary / extraordinary: Japanese Contemporary Photography*, Museum fur Ostasiatische Kunst, Berlin The exhibition toured to Spain, Belgium, Italy, UK, Mexico, USA, Japan, Philippines  
 2001-2002 *Kiss in the Dark: Contemporary Japanese Photography*, Tokyo Metropolitan Museum of Photography, Tokyo, Japan / Marugame Genichiro-Inokuma Museum of Contemporary Art, Kagawa, Japan

**Selected Public Collection**

Tokyo Metropolitan Museum of Photography/ Hiroshima City Museum of Contemporary Art/ KAWASAKI CITY MUSEUM/ Shanghai Art Museum/ Dazaifu Tenmangu Collection/ The Kinsey Institute/ JPMorgan Chase Art Collection

Park Grace Shinjuku Bldg. 316, 4-32-6, Nishi-Shinjuku, Shinjuku-ku, Tokyo 160-0023 Japan

Opening Hours: 12:00 - 19:00 (Closed on Sunday, Monday, National Holiday) [info@ycassociates.co.jp](mailto:info@ycassociates.co.jp) +81-3-6276-6731